



Genossenschaft  
Alterssiedlung Sissach

Weidenbodenweg 2, 4450 Sissach

<http://www.alterssiedlung-sissach.ch/>

# Erstvermietung 11 Alterswohnungen

Weidenbodenweg 2

4450 Sissach

zentral wohnen!

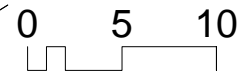
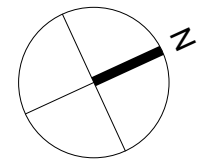


Kontakt: Martina Chrétien  
079 760 97 86, [martina@chretien.ch](mailto:martina@chretien.ch)

Bauherrschaft:

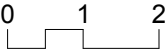
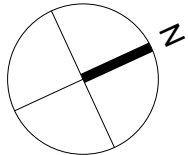
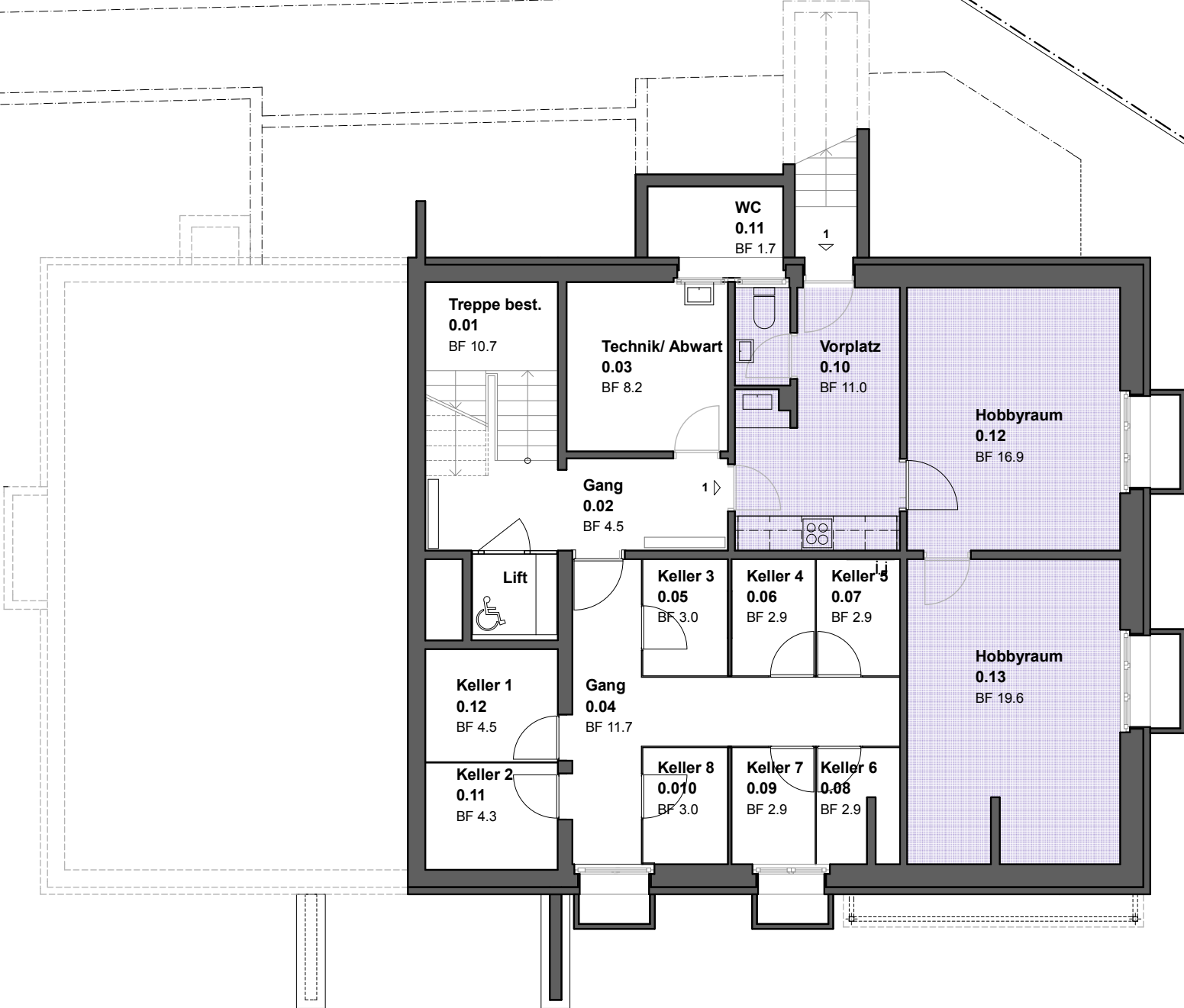
Genossenschaft Alterssiedlung  
Sissach, p.a. Martina Chrétien  
Sonnhaldenweg 27  
4450 Sissach

Übersichtsplan



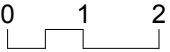
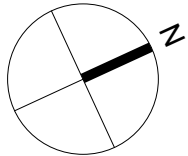
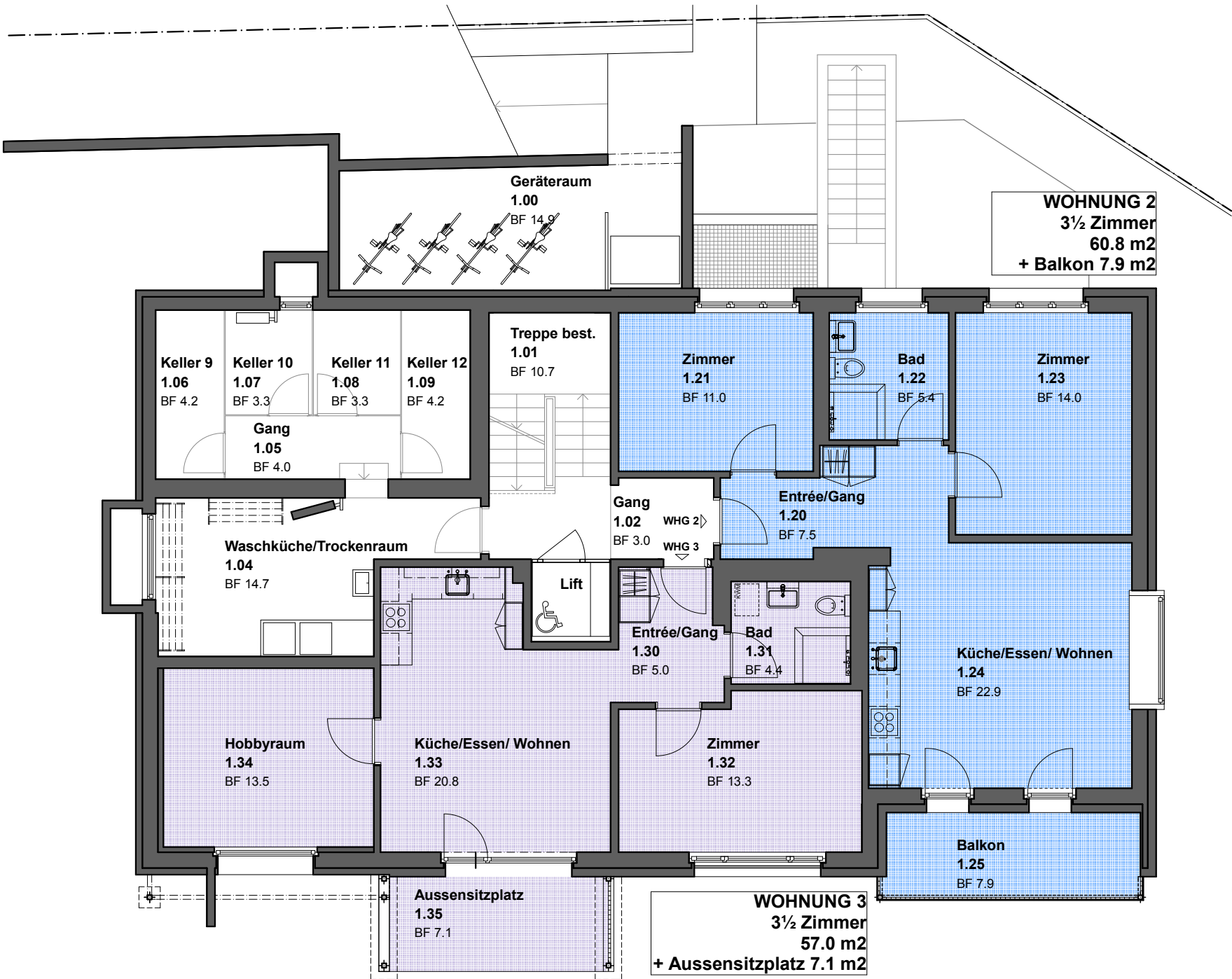
Untergeschoss 0

1:100



Sockelgeschoss 1

1:100

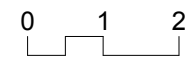
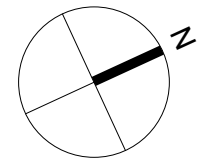
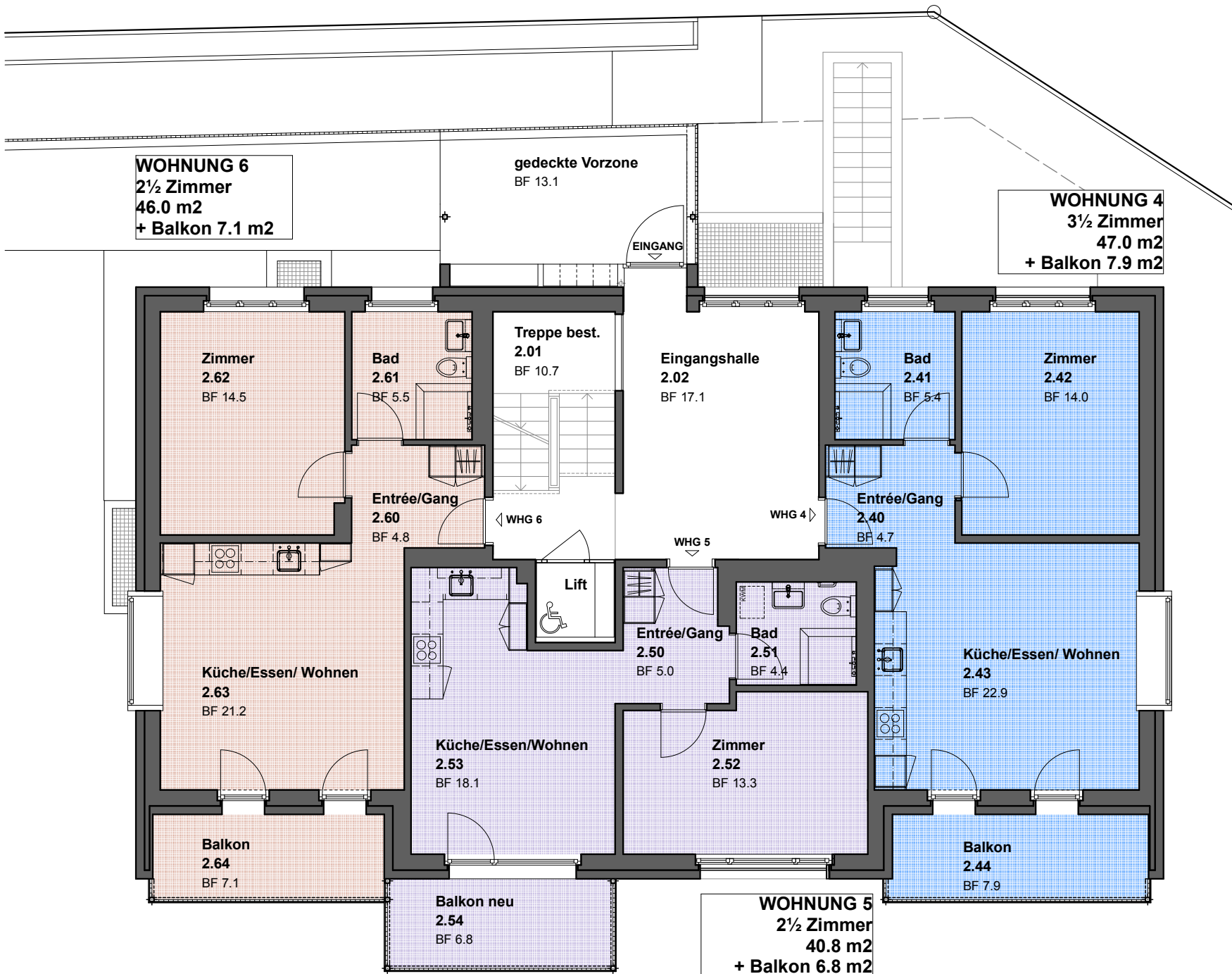




Perspektive Küche  
Wohnung 2, 4, 7

Erdgeschoss 2

1:100



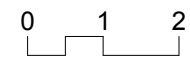
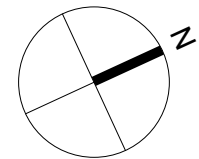
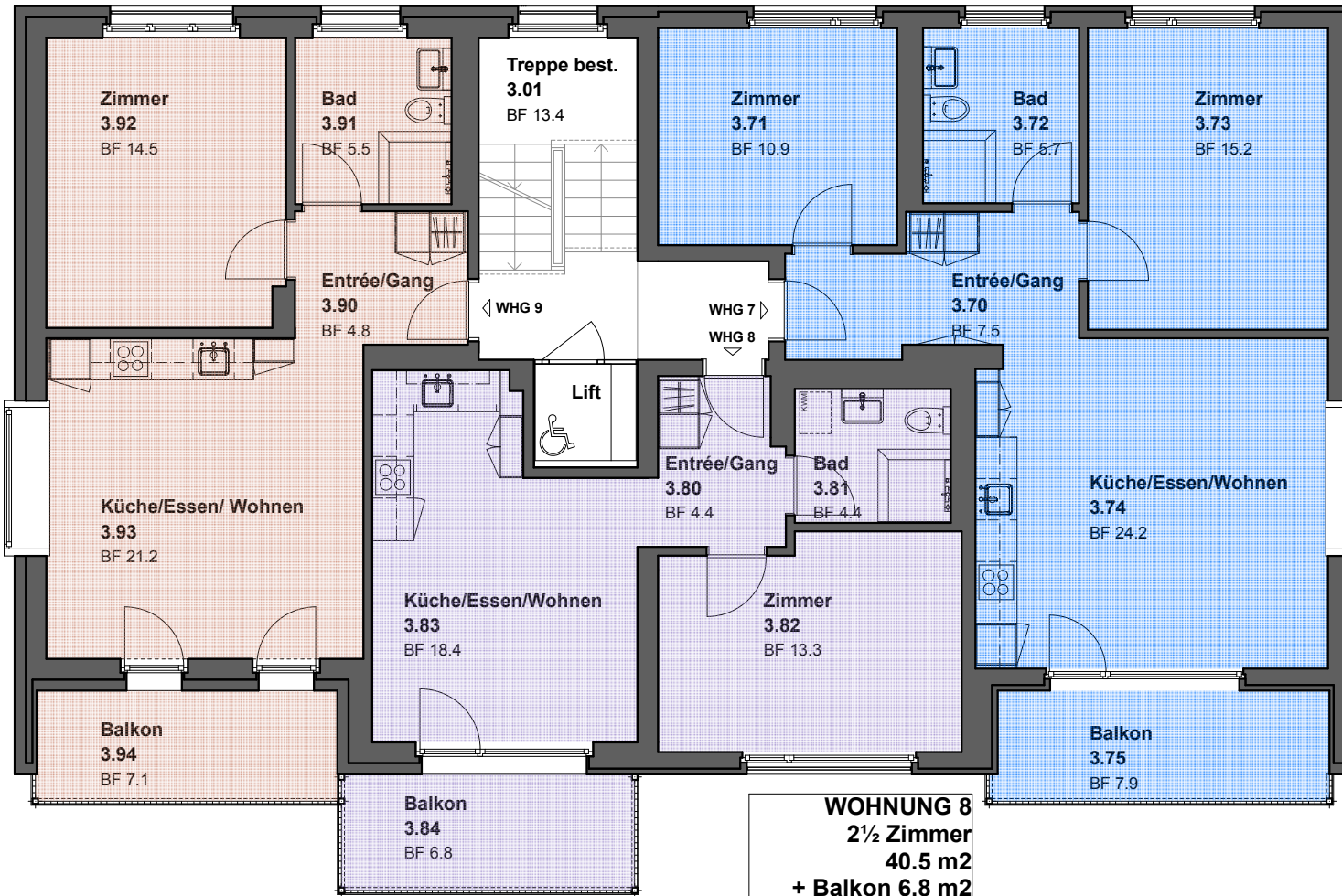


Perspektive Küche  
Wohnung 6, 9



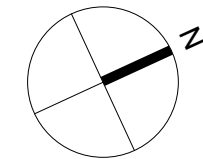
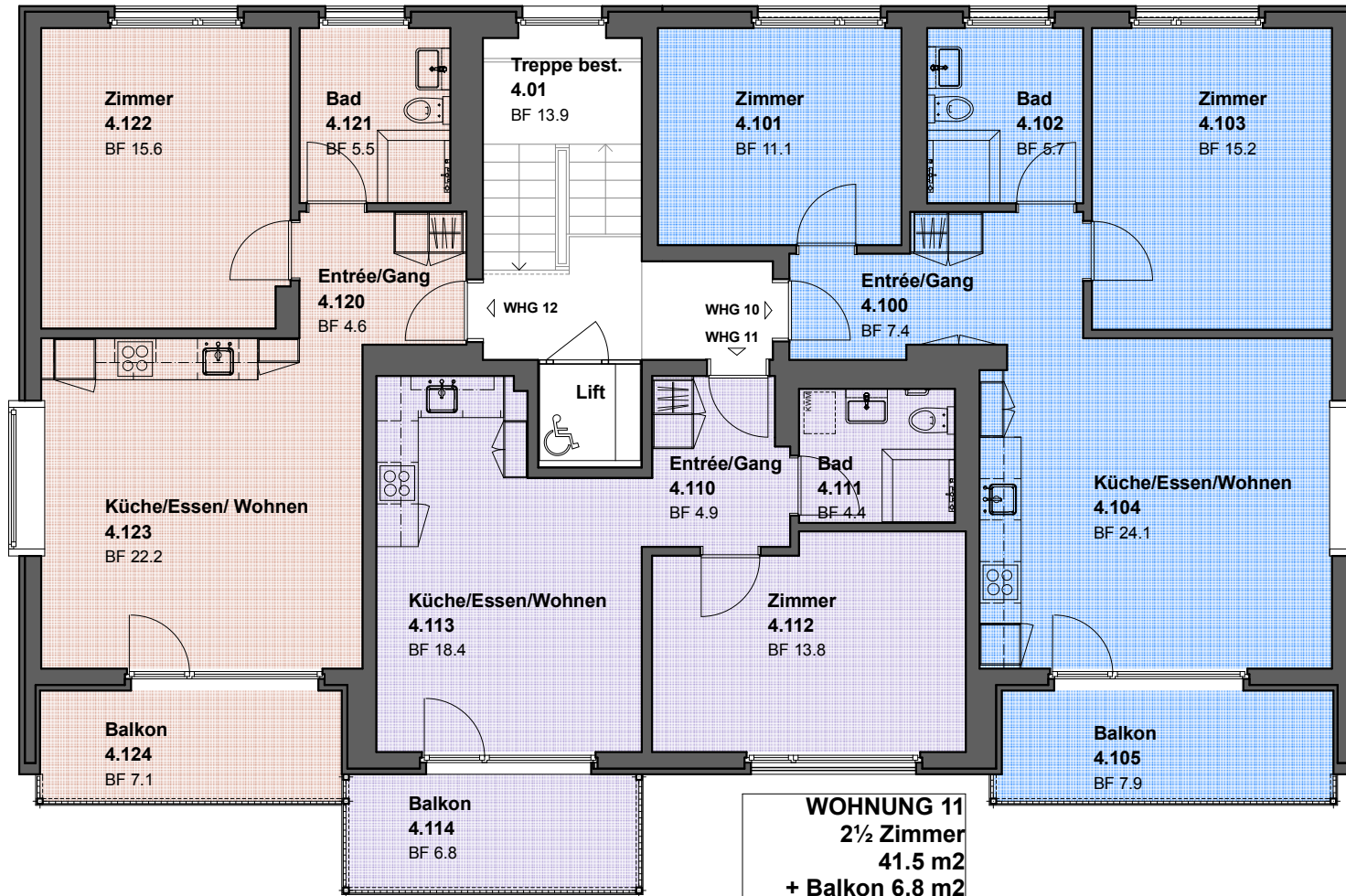
**WOHNUNG 9**  
 2½ Zimmer  
 46.0 m<sup>2</sup>  
 + Balkon 7.1 m<sup>2</sup>

**WOHNUNG 7**  
 3½ Zimmer  
 63.5 m<sup>2</sup>  
 + Balkon 7.9 m<sup>2</sup>



**WOHNUNG 12**  
 2½ Zimmer  
 47.9 m<sup>2</sup>  
 + Balkon 7.1 m<sup>2</sup>

**WOHNUNG 10**  
 3½ Zimmer  
 63.5 m<sup>2</sup>  
 + Balkon 7.9 m<sup>2</sup>





Perspektive Küche  
Wohnung 10



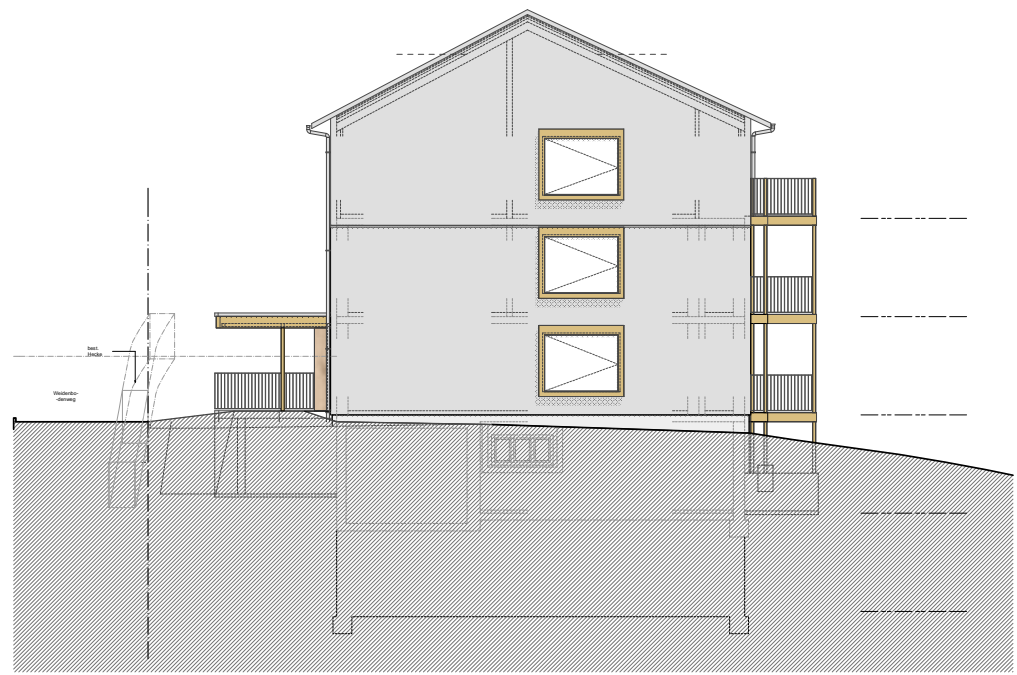
Perspektive Küche  
Wohnung 12

<b>AWS</b>	Umbau Variante 11-Familienhaus Weidenbodenweg 2, Parz. 2382 4450 Sissach	Objekt Nr. B11-107 Plan Nr.: Index:
Plan: <b>Fassadenplan</b>	Mst. 1:100	Gezeichnet: jr Datum: 2015.10.27 Plangröße: A1
Gesuchsteller, Landeigentümer:	Genossenschaft Alterssiedlung Sissach p.a. Paul Gass Stutzhölzliweg 4 4450 Sissach	
Projektverfasser:	Lehner + Tomaselli AG Dipl. Architekten HTL STV Gelterkinderstrasse 28, 4450 Sissach Tel. 061 / 975 00 75, Fax 061 / 975 00 71	

Legende:



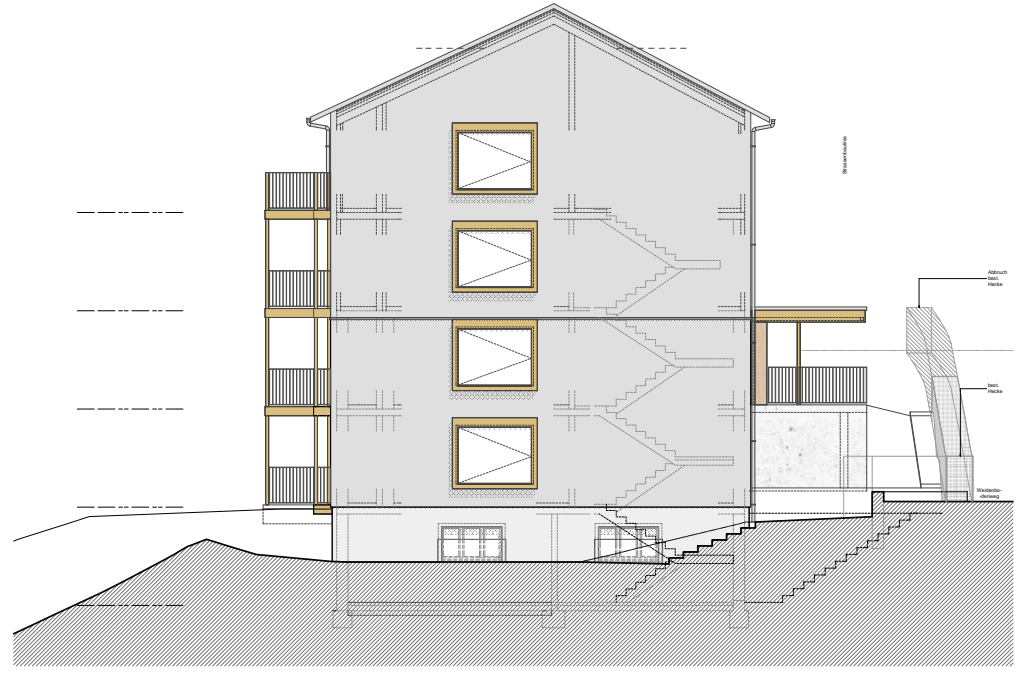
Ansicht Ost



Ansicht Süd



Ansicht West



Ansicht Nord